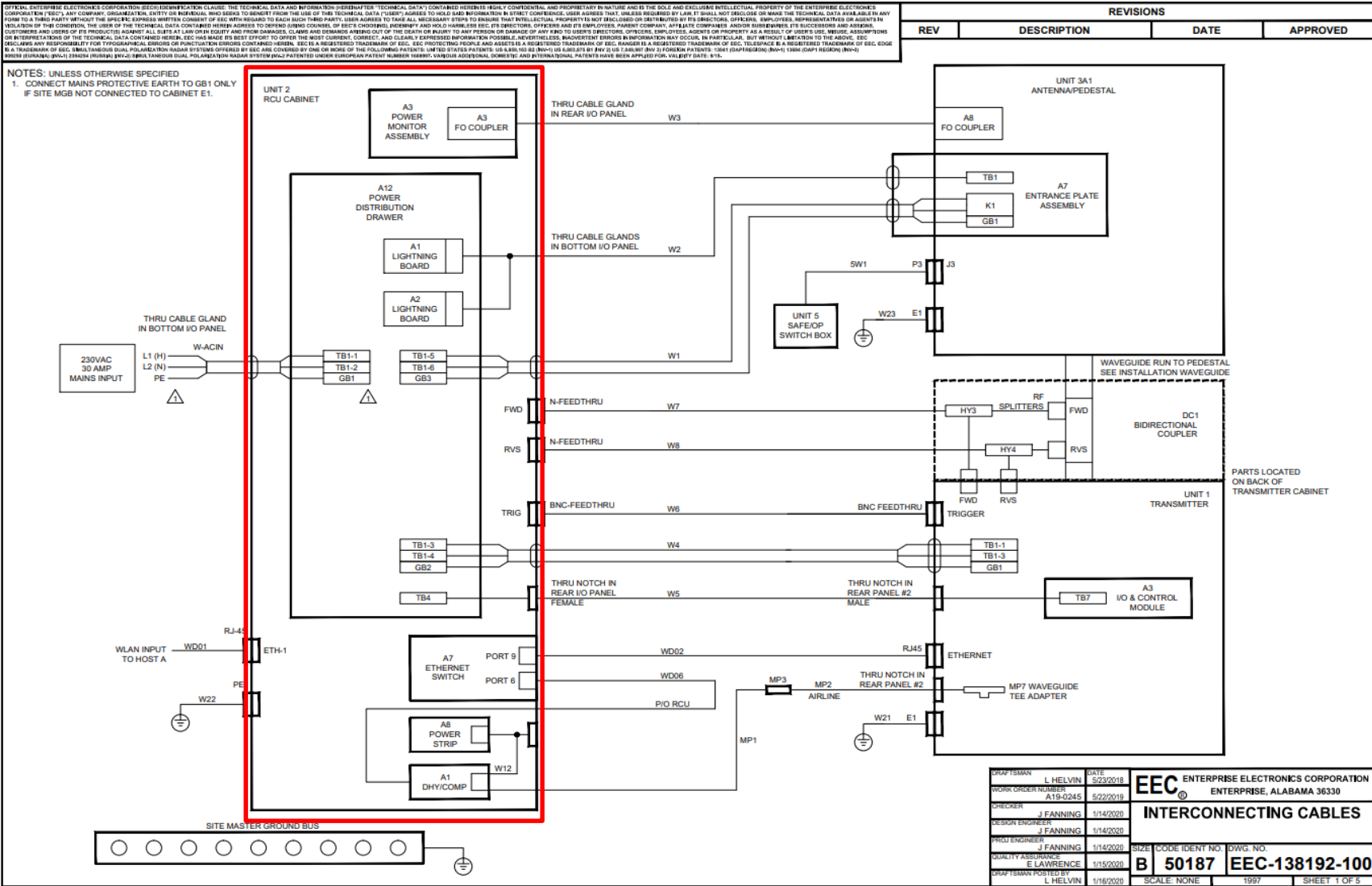


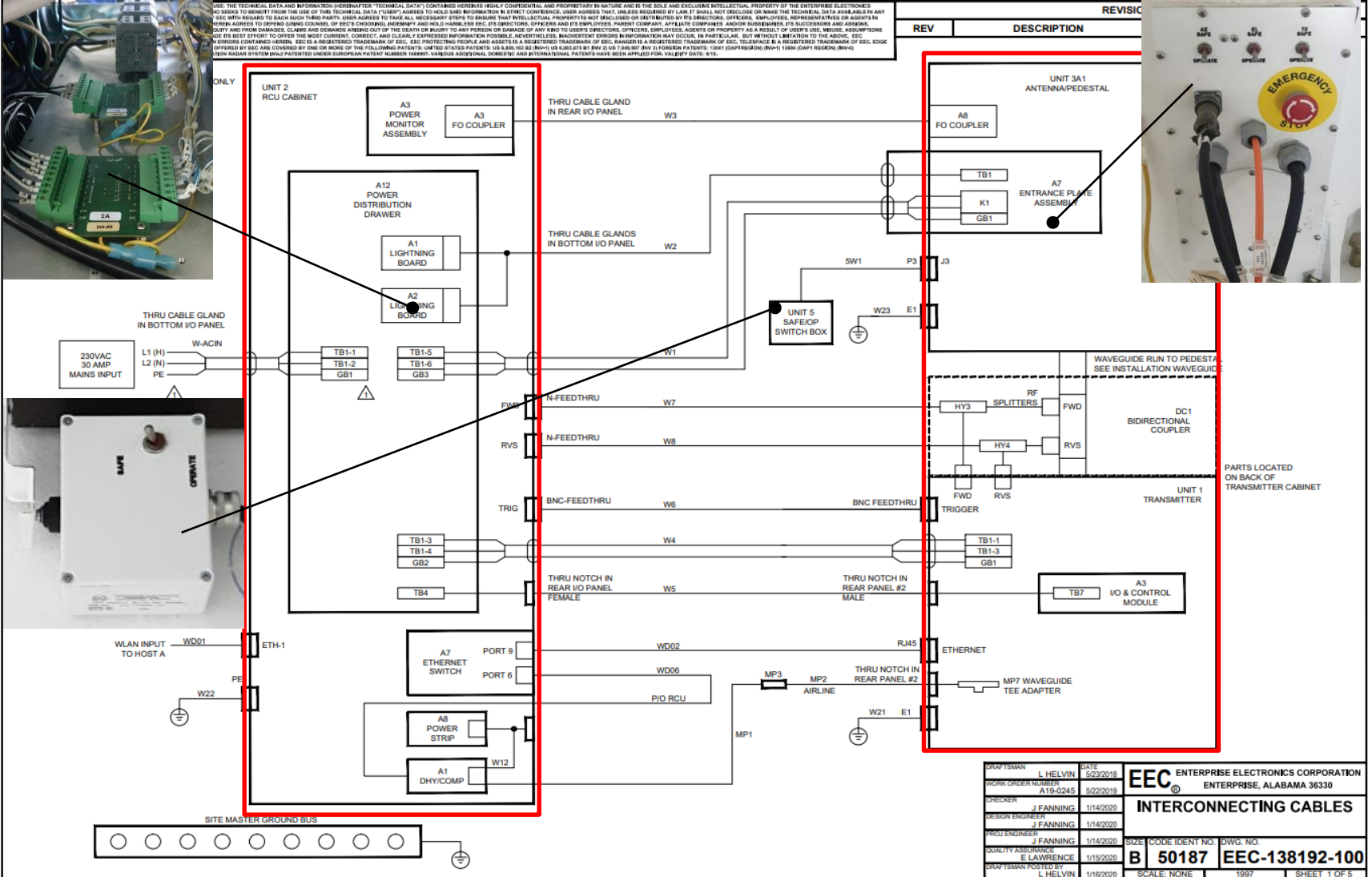
UNIT 2



REVISIONS			
REV	DESCRIPTION	DATE	APPROVED

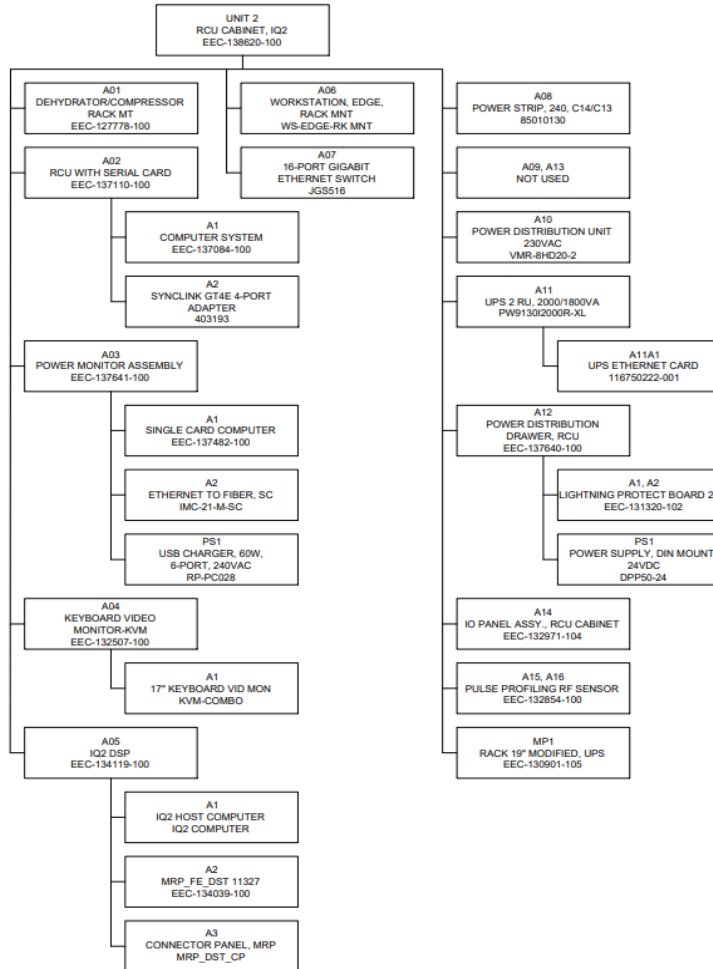
DRAWN BY	L HELVIN	DATE	02/20/2018	EEC ENTERPRISE ELECTRONICS CORPORATION ENTERPRISE, ALABAMA 36330
WORK ORDER NUMBER	A18-0245		02/20/2018	
CHECKER	J FANNING		1/14/2020	INTERCONNECTING CABLES
DESIGN ENGINEER	J FANNING		1/14/2020	
PROJ ENGINEER	J FANNING		1/14/2020	SIZE: CODE IDENT NO. DWG. NO. B 50187 EEC-138192-100
QUALITY ASSURANCE	E LAWRENCE		1/15/2020	
CIRCUIT DESIGNED BY	L HELVIN		1/16/2020	SCALE: NONE 1997 SHEET 1 OF 5 J1997

LIGHTNING PROTECTION BOARD



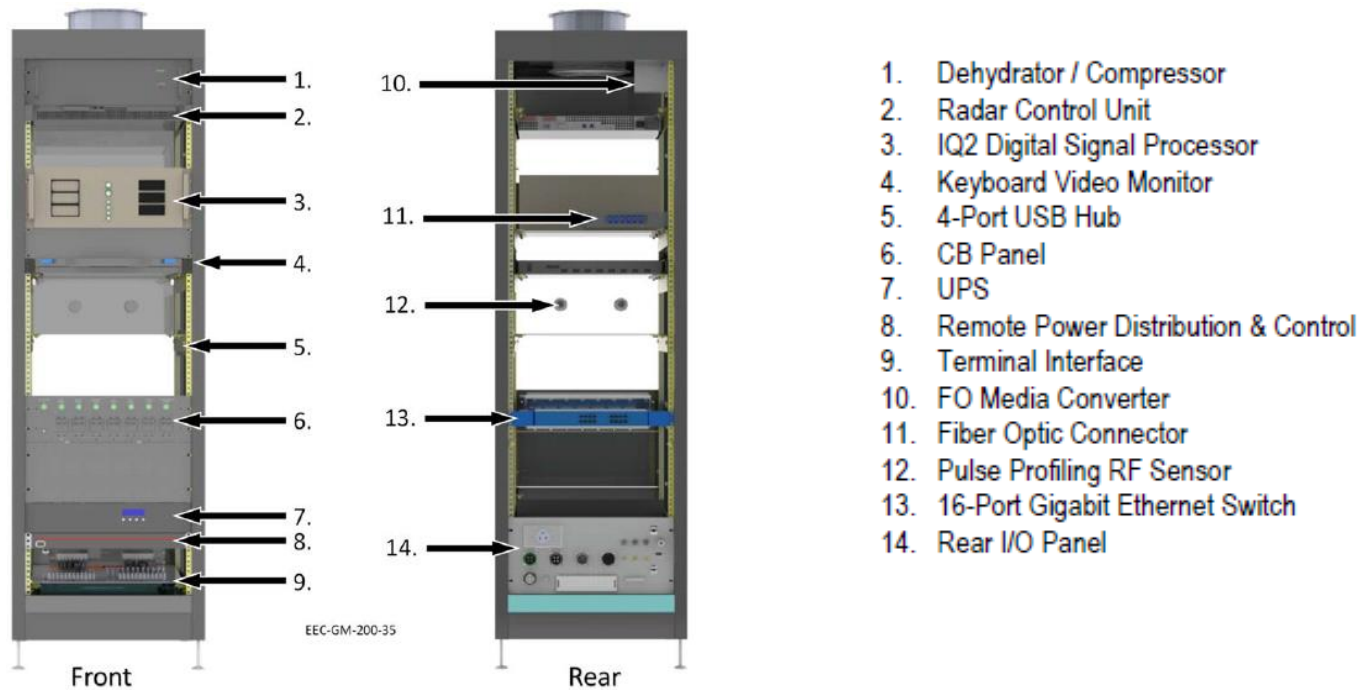
UNIT 2 RADAR CONTROL UNIT, IQ2

REVISIONS			
REV	DESCRIPTION	DATE	APPROVED



FAMILY TREE			
LMH	JF	SIZE	CODE IDENT NO / DWG. NO
1/16/2020	1/15/2020	B	50187 EEC-138191-100
POSTED BY	CHECKER	SCALE: NONE	1997 SHEET 3 OF 6

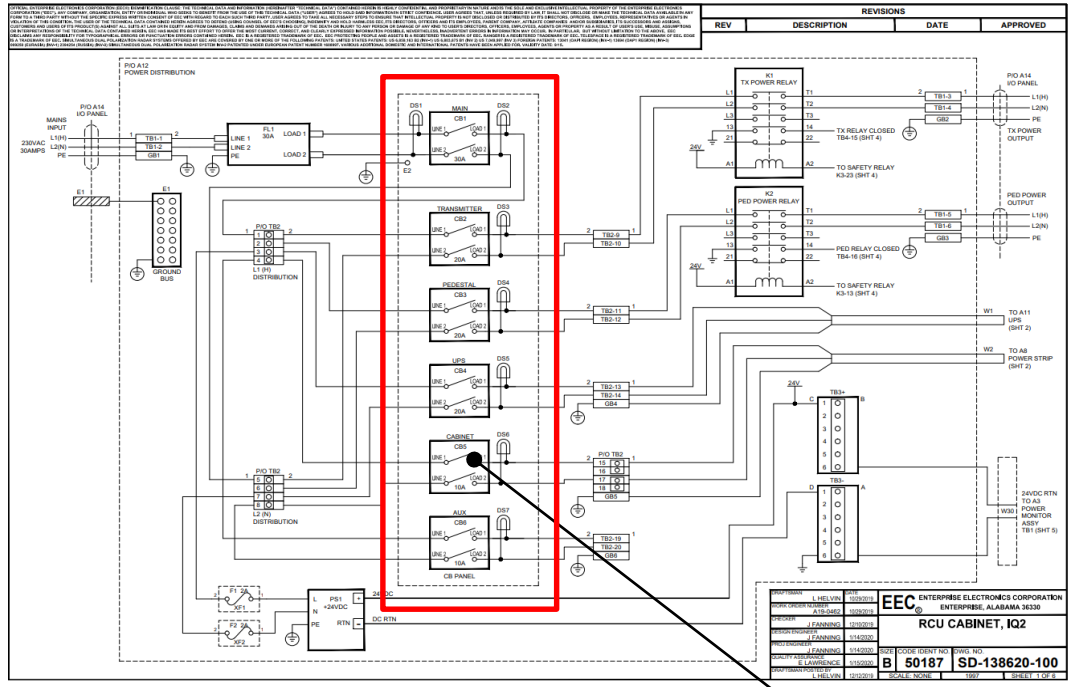
UNIT 2 RADAR CONTROL UNIT, IQ2



Radar Control Cabinet

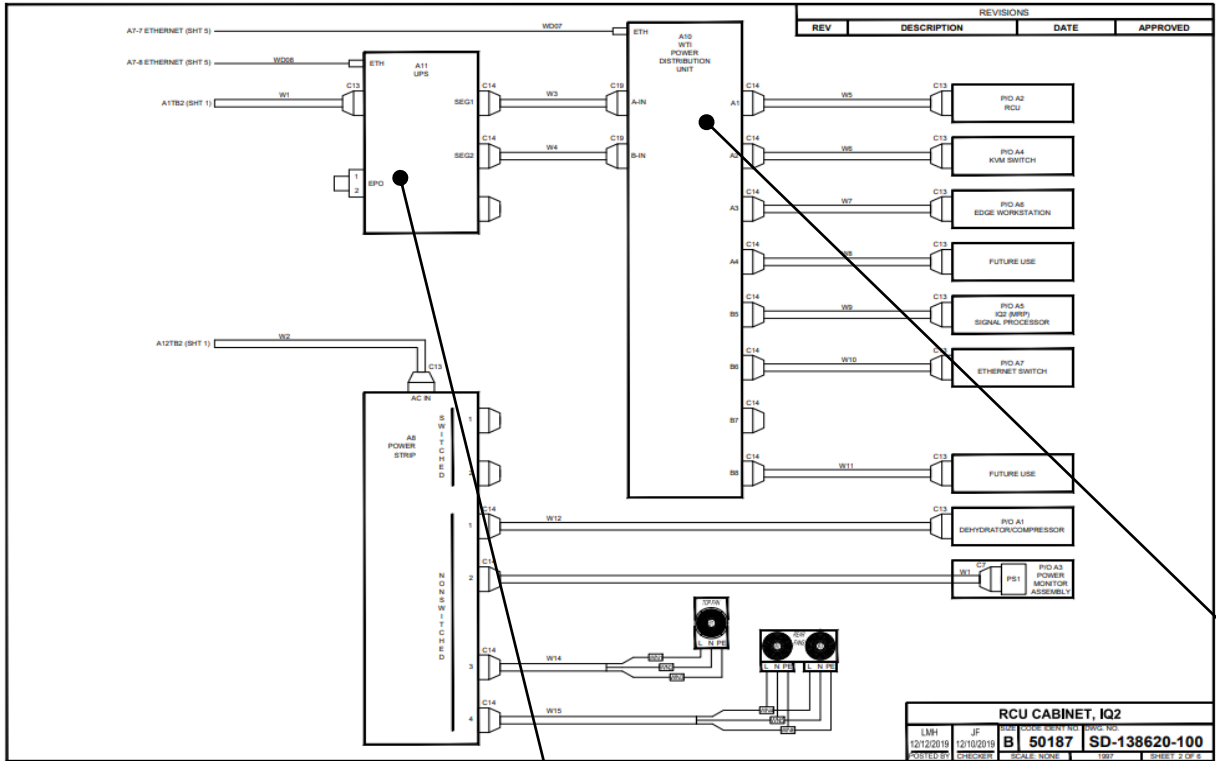
ประกอบด้วย ชุด Dehydrator, A1997 EDGE Workstation, Radar Control Unit, Digital Signal Processor – IQ2-MRP, Network Power Distribution, Circuit Breaker Panel, KVM, Pulse Profiling RF sensor เป็นต้น เป็นตู้สำหรับควบคุมการทำงานของระบบเรดาร์ ผ่านทางชุด KVM (Keyboard, Video & Monitor) สามารถควบคุมแหล่งสัญญาณอินพุตจำนวน 3 ชุดคือ EDGE Server Workstation, Radar Control Unit และ MRP

CIRCUIT BREAKER CONTROL PANEL



CIRCUIT BREAKER CONTROL PANEL

UPS AND NETWORK POWER SWITCH



NETWORK POWER SWITCH

UPS POWERWARE



EDGE , RCU, POWER MONITOR



CH.1_A1997 EDGE WORKSTATION



CH.2_RADAR CONTROL UNIT



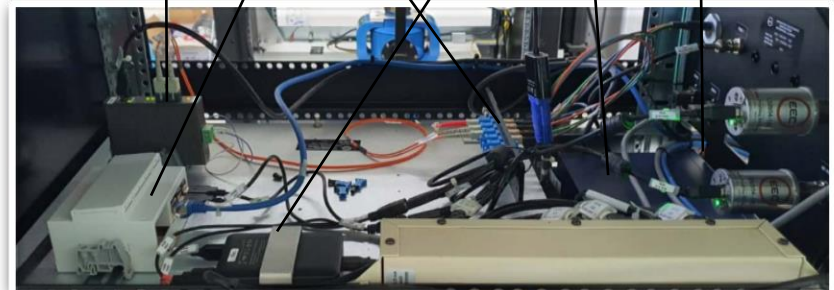
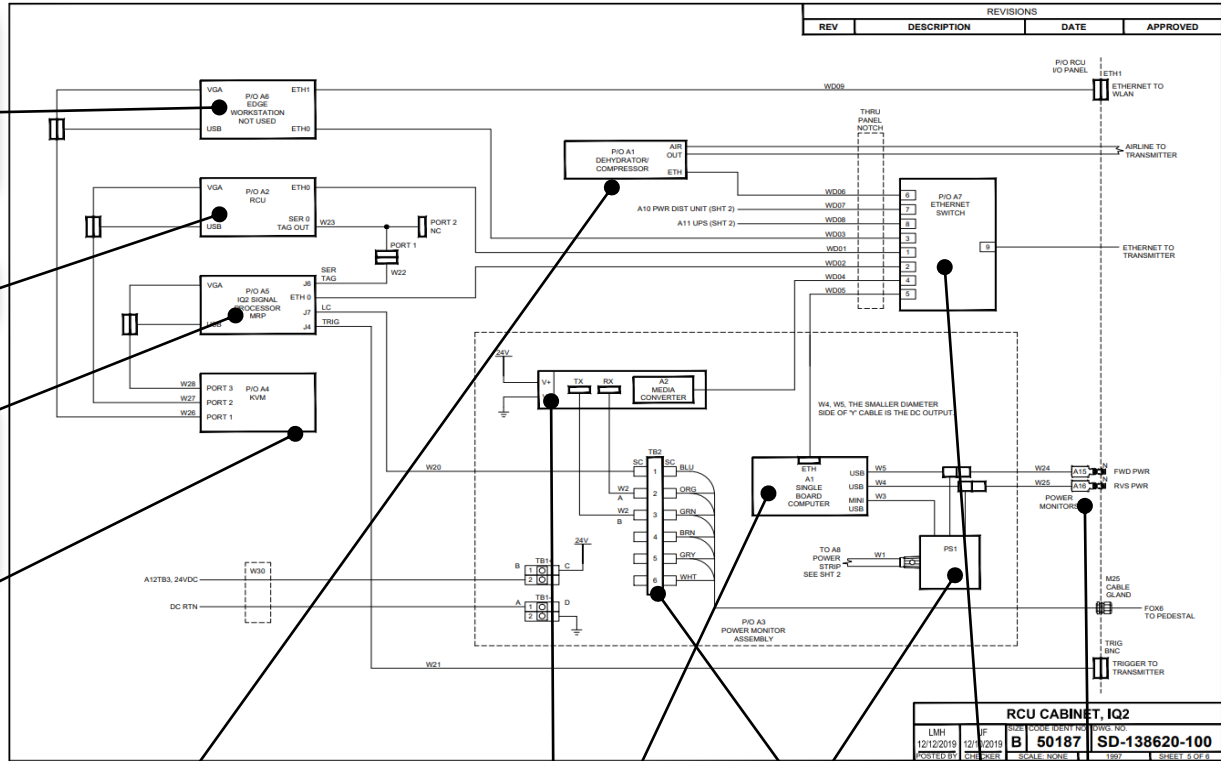
CH.3_DIGITAL SIGNAL PROCESSOR



KVM SELECTOR



DEHYDRATOR/COMPRESSOR



MEDIA CONVERTER / POWER MONITOR